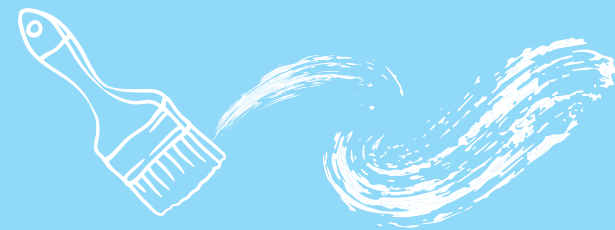


MAY 2024

HOT SHEET



3M



Masking Tape
\$2.51 – \$5.85

3M



Glaze Putty
\$4.09 – \$10.04

Allway Tools



Snap-Off Blades
\$0.92 – \$9.91

AMMEX



Disposable Gloves
\$7.85

BUFFALO



Knit Rags
\$2.89 – \$18.86

Crawford



Spackling Paste
\$5.09 – \$12.74

DAP



Sealants
\$3.01 – \$3.34

DRIPLESS
Sundries for the Painting Industry



Caulk Guns
\$5.14 – \$23.95

Dunn's
PAINTS



Paint Primers
\$9.79 – \$87.44

Flood



Paint Conditioners
\$6.15 – \$16.36

Franklin F
Adhesives & Polymers



Wood Glues
\$1.61 – \$16.20

HP
HANDY PRODUCTS



Paint Trays & Liners
\$3.16 – \$7.55

HYDE



Joint Knives & Scrapers
\$3.72 – \$8.04

ipg



Duct Tape
\$3.69 – \$4.43

ips



Contractor Bags
\$7.77 – \$8.49

Campaign 12110 (Promotion Expires May 31, 2024)

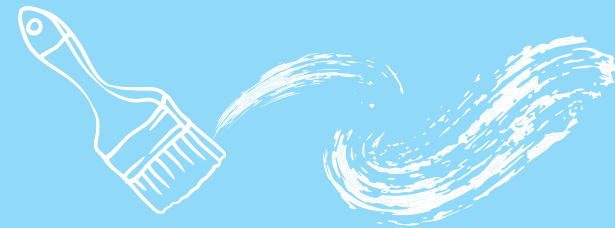
Promotional orders will be shipped with stock order. Account must be in good standing order. Items must be ordered in full case quantities. To receive special pricing, please place all promotional orders directly with your Sales Representative or our Customer Service Department. Prices subject to change without notice. ACA PaintCare Recovery Fees may apply.

Phone 800.877.6111 | Fax 888.777.1953 | customerservice@paintsundries.com | paintsundries.com

PSS
AN APPLICATE COMMERCE COMPANY

MAY 2024

HOT SHEET



Masking Tape
\$4.38 - \$8.76



Rust Activator
\$3.19 - \$50.54



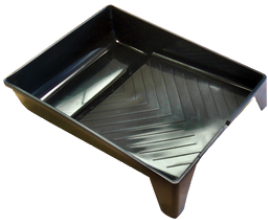
Sanding Discs
\$8.27 - \$13.94



Wiping Stains
\$14.42 - \$21.37



Construction Adhesives
\$2.95 - \$5.72



Paint Trays
\$0.43 - \$2.00



Paint Brushes
\$1.76 - \$3.73



Paint Brushes
\$6.60 - \$10.60



Lacquers
\$6.13 - \$28.70



Interior Paint & Primer
\$20.18



Spray Paints
\$3.39 - \$5.46



Masking Tape
\$4.33 - \$16.42



Nail Sets
\$6.54 - \$13.25



Drop Cloths
\$6.55 - \$19.43



Paint Brushes
\$1.33 - \$3.94

Campaign 12110 (Promotion Expires May 31, 2024)

Promotional orders will be shipped with stock order. Account must be in good standing order. Items must be ordered in full case quantities. To receive special pricing, please place all promotional orders directly with your Sales Representative or our Customer Service Department. Prices subject to change without notice. ACA PaintCare Recovery Fees may apply.

Phone 800.877.6111 | Fax 888.777.1953 | customerservice@paintsundries.com | paintsundries.com



VENDOR	LOC	PART #	QTY	CS	DESCRIPTION	UPC	PROMO
3M	12345	710-160		48	.70X60YD 3M ORGNL M-SURFACE BLU SW 2090-18NC	0-51115-03680-4	2.51
3M	12345	710-178		36	.94X60YD 3M ORGNL M-SURFACE BLU SW 2090-24NC	0-51115-03681-1	2.92
3M	12345	710-186		24	1.41X60YD 3M ORGNL M-SURFACE BLU SW 2090-36NC	0-51115-03682-8	4.38
3M	12345	710-194		18	1.88X60YD 3M ORGNL M-SURFACE BLU SW 2090-48NC	0-51115-03683-5	5.85
3M	12345	046-045		12	1 LB BONDO GLAZING AND SPOT PUTTY TUBE 651	0-76308-00651-8	10.04
3M	1235	046-037		6	4.5OZ BONDO GLAZE PUTTY 907	0-76308-00907-6	4.09
ALLWAY TOOLS INC.	1235	202-100		6	9MM ALLWAY SNAP BLADE CARBON STL 5PC SB9-5C	0-37064-41011-7	0.92
ALLWAY TOOLS INC.	1235	202-101		6	9MM ALLWAY SNAP BLADE CRBON STL 20PC SB9-20C	0-37064-41012-4	2.73
ALLWAY TOOLS INC.	1235	202-102		6	9MM ALLWAY SNAP BLADE BLACK STL 5PC SB9-5B	0-37064-41013-1	1.53
ALLWAY TOOLS INC.	1235	202-103		6	9MM ALLWAY SNAP BLADE BLACK STL 20PC SB9-20B	0-37064-41014-8	4.40
ALLWAY TOOLS INC.	1235	202-104		6	9MM ALLWAY SNAP BLADE TITANIUM 5PC SB9-5T	0-37064-41015-5	1.96
ALLWAY TOOLS INC.	1235	202-105		6	18MM ALLWAY SNAP BLADE CARBON STL 5PC SB18-5C	0-37064-41016-2	1.36
ALLWAY TOOLS INC.	1235	202-106		6	18MM ALLWAY SNAP BLADE CRBN STL 20PC SB18-20C	0-37064-41017-9	3.61
ALLWAY TOOLS INC.	1235	202-107		6	18MM ALLWAY SNAP BLADE BLACK STL 5PC SB18-5B	0-37064-41018-6	1.97
ALLWAY TOOLS INC.	1235	202-108		6	18MM ALLWAY SNAP BLADE BLK STL 20PC SB18-20B	0-37064-41019-3	5.30
ALLWAY TOOLS INC.	1235	202-109		6	18MM ALLWAY SNAP BLADE TITANIUM 5PC SB18-5T	0-37064-41020-9	2.67
ALLWAY TOOLS INC.	1235	202-110		6	25MM ALLWAY SNAP BLADE BLACK STL 5PC SB25-5B	0-37064-41021-6	2.75
ALLWAY TOOLS INC.	1235	202-111		6	25MM ALLWAY SNAP BLADE BLK STL 20PC SB25-20B	0-37064-41022-3	9.91
ALLWAY TOOLS INC.	1235	202-112		6	25MM ALLWAY SNAP BLADE TITANIUM 5PC SB25-5T	0-37064-41023-0	3.64
AMMEX CORPORATION	12345	021-675		10	100PK GLOVEWORKS BLACK NITRILE MD GPNB44100	6-97383-93535-9	7.85
AMMEX CORPORATION	12345	021-683		10	100PK GLOVEWORKS BLACK NITRILE LRG GPNB46100	6-97383-93546-5	7.85
AMMEX CORPORATION	12345	021-691		10	100PK GLOVEWORKS BLACK NITRILE XL GPNB48100	6-97383-93557-1	7.85
BUFFALO INDUSTRIES LLC	12345	057-109		25	1 LB BUFFALO NEW BLEACHED KNIT RAGS 60200	0-32479-03005-9	2.89
BUFFALO INDUSTRIES LLC	12345	056-937		1	8 LB BUFFALO NEW BLEACHED KNIT RAGS 12026	0-32479-11116-1	18.86
CRAWFORD PRODUCTS COMPANY	12345	082-701		24	1/2 PT CRAWFORD'S INT/EXT SPACKLING PASTE	7-45648-31916-8	5.09
CRAWFORD PRODUCTS COMPANY	12345	082-719		12	QUART CRAWFORD'S INT/EXT SPACKLE PASTE METAL	7-45648-31904-5	12.74
DAP GLOBAL INC.	12345	091-348		12	10.1 OZ CART DAP DYNAFLEX 230 DK BRONZE 18303	0-70798-18303-2	3.33
DAP GLOBAL INC.	12345	091-355		12	10.1 OZ CART DAP DYNAFLEX 230 CEDAR TAN 18412	0-70798-18412-1	3.33
DAP GLOBAL INC.	12345	091-397		12	10.1 OZ CART DAP DYNAFLEX 230 WHITE 18300	0-70798-18300-1	3.01
DAP GLOBAL INC.	234	227-967		15	5.5 OZ TUBE DAP DYNAFLEX 230 WHITE 18285	0-70798-18285-1	3.00
DAP GLOBAL INC.	12345	091-405		12	10.1 OZ CART DAP DYNAFLEX 230 CLEAR 18305	0-70798-18305-6	3.11
DAP GLOBAL INC.	12345	091-421		12	10.1 OZ CART DAP DYNAFLEX 230 BROWN 18302	0-70798-18302-5	3.33
DAP GLOBAL INC.	12345	091-447		12	10.1 OZ CART DAP DYNAFLEX 230 GRAY 18301	0-70798-18301-8	3.33
DAP GLOBAL INC.	12345	091-454		12	10.1 OZ CART DAP DYNAFLEX 230 ALMOND 18306	0-70798-18306-3	3.33
DAP GLOBAL INC.	12345	285-692		12	10.1 OZ CART DAP DYNAFLEX 230 BLACK 18280	0-70798-18280-6	3.34
DUNN-EDWARDS CORPORATION	123	142-100		4	GAL DUNN'S PAINTS PVA DRYWALL PRMR DPVA00-WH1	6-48140-24077-3	9.79
DUNN-EDWARDS CORPORATION	123	142-101		1	5GL DUNN'S PAINTS PVA DRYWALL PRMR DPVA00-WH5	6-48140-24078-0	48.94
DUNN-EDWARDS CORPORATION	123	142-110		4	GAL DUNN'S PAINTS MULTI SURFC PRMR DPMP00-WH1	6-48140-24082-7	17.49
DUNN-EDWARDS CORPORATION	123	142-111		1	5GL DUNN'S PAINTS MULTI SURFC PRMR DPMP00-WH5	6-48140-24093-3	87.44
DRIPLESS INC.	12345	125-138		12	10OZ DRIPLESS SKELETON HEX ROD CLK GUN SH200	7-64509-01210-9	5.14
DRIPLESS INC.	12345	125-146		12	10OZ CART DRIPLESS HD RATCHET CAULK GUN CR200	7-64509-01220-8	5.69
DRIPLESS INC.	12345	125-155		12	10OZ DRIPLESS CRADLE RATCHET CAULK GUN CR175	7-64509-01175-1	3.78
DRIPLESS INC.	12345	125-160		1	20OZ DRIPLESS PRO ERGO SAUSGE CLK GUN ETS6000	7-64509-01006-8	23.95
DRIPLESS INC.	12345	125-170		10	10OZ DRIPLESS DIY ERGO RND CLK GUN ETS1100	7-64509-01111-9	5.89
FLOOD / PPG	12345	191-601		6	QUART FLOOD FLOETROL LATEX PAINT CONDITIONER	0-10273-00610-4	6.15
FLOOD / PPG	12345	191-619		4	GAL FLOOD FLOETROL LATEX PAINT CONDITIONER	0-10273-00170-3	16.36
FRANKLIN INTERNATIONAL	1235	193-110		12	4OZ FRANKLIN TITEBOND WOOD GLUE 5062	0-37083-05062-2	1.61
FRANKLIN INTERNATIONAL	1235	193-128		12	8OZ FRANKLIN TITEBOND WOOD GLUE 5063	0-37083-05063-9	2.40
FRANKLIN INTERNATIONAL	12345	193-144		12	16OZ FRANKLIN TITEBOND WOOD GLUE 5064	0-37083-05064-6	3.93
FRANKLIN INTERNATIONAL	12345	193-151		6	QUART FRANKLIN TITEBOND WOOD GLUE 5065	0-37083-05065-3	6.05
FRANKLIN INTERNATIONAL	1234	193-169		2	GAL FRANKLIN TITEBOND WOOD GLUE 5066	0-37083-05066-0	16.20
HANDY PAINT PRODUCTS	12345	223-230		6	HANDY PAINT TRAY DEEP W/MAGNET 7500-CC	0-12758-07500-1	7.55
HANDY PAINT PRODUCTS	12345	223-248		12	3-PK HANDY PAINT TRAY DEEP LINERS 7510-CC	0-12758-07510-0	3.16
HYDE TOOLS INC.	1235	240-371		5	1-1/4" HYDE PROSTNLS HH STIFF PUTTY KNF 06258	0-79423-06258-2	4.62
HYDE TOOLS INC.	12345	240-372		5	1-1/2" HYDE PROSTNLS HH FLEX PUTTY KNF 06108	0-79423-06108-0	3.72
HYDE TOOLS INC.	1235	240-373		5	1-1/2" HYDE PROSTNLS HH STFF SCRAPER 06158	0-79423-06158-5	3.72
HYDE TOOLS INC.	1235	240-374		5	3" HYDE PROSTNLS HH FLEX JOINT KNF 06358	0-79423-06358-9	5.07
HYDE TOOLS INC.	1235	240-375		5	3" HYDE PROSTNLS HH STIFF SCRAPER 06408	0-79423-06408-1	5.07
HYDE TOOLS INC.	1235	240-376		5	4" HYDE PROSTNLS HH FLEX JOINT KNF 06578	0-79423-06578-1	6.94

VENDOR	LOC	PART #	QTY	CS	DESCRIPTION	UPC	PROMO
HYDE TOOLS INC.	12345	240-377		5	5" HYDE PROSTNLS HH FLEX JOINT KNF 06778	0-79423-06778-5	7.58
HYDE TOOLS INC.	12345	240-378		5	6" HYDE PROSTNLS HH FLEX JOINT KNF 06878	0-79423-06878-2	8.04
INTERTAPE POLYMER GROUP	12345	019-810		24	1.88"X60YD INTERTAPE JOBSITE DUCT TAPE 6700	0-77922-72982-1	4.43
INTERTAPE POLYMER GROUP	12345	019-836		24	1.88"X55YD INTERTAPE FIX IT DUCT TAPE 6900	0-77922-76650-5	3.69
IPS INDUSTRIES INC.	12345	244-001		1	42 GAL IPS 3 MIL CONTRACTOR BAG 20CT 13-11108	6-06301-00318-6	8.49
IPS INDUSTRIES INC.	12345	244-002		1	55 GAL IPS 2 MIL CONTRACTOR BAG 20CT 13-11109	6-06301-00319-3	7.77
LINZER PRODUCTS	12345	267-460		36	0.94X54.6YD AXIS APT WASHI 60-DAY PNTR'S TAPE	7-43854-01368-9	4.38
LINZER PRODUCTS	12345	267-462		24	1.41X54.6YD AXIS APT WASHI 60-DAY PNTR'S TAPE	7-43854-01369-6	6.60
LINZER PRODUCTS	12345	267-464		24	1.88X54.6YD AXIS APT WASHI 60-DAY PNTR'S TAPE	7-43854-01370-2	8.76
MODERN MASTERS INC.	12345	305-680		6	4 OZ MOD MSTR RUST ACTIVATOR PA904	7-40774-99976-5	3.19
MODERN MASTERS INC.	12345	305-730		4	16 OZ MOD MSTR RUST ACTIVATOR PA904	7-40774-99972-7	11.95
MODERN MASTERS INC.	12345	305-870		2	GAL MODERN MSTR RUST ACTIVATOR PA904	7-40774-99894-2	50.54
NORTON CO.	12345	311-126		10	9X11 SHT NORTON PS JOB PK ALU-OX 320 02633	0-76607-02633-0	8.27
NORTON CO.	12345	311-134		10	9X11 SHT NORTON PS JOB PK ALU-OX 220 02636	0-76607-02636-1	8.27
NORTON CO.	12345	311-142		10	9X11 SHT NORTON PS JOB PK ALU-OX 180 02637	0-76607-02637-8	8.27
NORTON CO.	12345	311-159		10	9X11 SHT NORTON PS JOB PK ALU-OX 150 02638	0-76607-02638-5	11.28
NORTON CO.	12345	311-167		10	9X11 SHT NORTON PS JOB PK ALU-OX 120 02639	0-76607-02639-2	11.28
NORTON CO.	12345	311-175		10	9X11 SHT NORTON PS JOB PK ALU-OX 100 02640	0-76607-02640-8	11.28
NORTON CO.	12345	311-183		10	9X11 SHT NORTON PS JOB PK ALU-OX 80 02641	0-76607-02641-5	12.64
NORTON CO.	1235	311-191		10	9X11 SHT NORTON PS JOB PK ALU-OX 60 02642	0-76607-02642-2	13.94
OLD MASTERS	12345	315-416		4	QUART OLD MASTERS WIPING STN NAT TNT BS 11104	0-86348-11104-2	14.42
OLD MASTERS	12345	315-424		4	QUART OLD MASTERS WIPING STAIN GOLD OAK 11204	0-86348-11204-9	15.45
OLD MASTERS	12345	315-432		4	QUART OLD MASTERS WIPING STAIN CHERRY 11304	0-86348-11304-6	15.45
OLD MASTERS	12345	315-440		4	QUART OLD MASTERS WIPING STAIN RED MAHG 11404	0-86348-11404-3	15.45
OLD MASTERS	12345	315-457		4	QUART OLD MASTERS WIPING STAIN PROVINCL 11504	0-86348-11504-0	15.45
OLD MASTERS	1235	315-465		4	QUART OLD MASTERS WIPING STAIN MAPLE 11604	0-86348-11604-7	15.45
OLD MASTERS	12345	315-473		4	QUART OLD MASTERS WIPING STAIN EAR AMER 11704	0-86348-11704-4	15.45
OLD MASTERS	12345	315-481		4	QUART OLD MASTERS WIPING STAIN DK MAHOG 11804	0-86348-11804-1	15.45
OLD MASTERS	12345	315-499		4	QUART OLD MASTERS WIPING STAIN CEDAR 11904	0-86348-11904-8	15.45
OLD MASTERS	12345	315-507		4	QUART OLD MASTERS WIPING STAIN DK WALNT 12004	0-86348-12004-4	15.45
OLD MASTERS	12345	315-515		4	QUART OLD MASTERS WIPING STAIN SPEC WAL 12104	0-86348-12104-1	15.45
OLD MASTERS	12345	315-523		4	QUART OLD MASTERS WIPING STAIN SPAN OAK 12204	0-86348-12204-8	15.45
OLD MASTERS	1235	315-531		4	QUART OLD MASTERS WIPING STAIN FRUITWD 12304	0-86348-12304-5	15.45
OLD MASTERS	12345	315-549		4	QUART OLD MASTERS WIPING STAIN PICK WHT 12404	0-86348-12404-2	15.45
OLD MASTERS	12345	315-557		4	QUART OLD MASTERS WIPING STAIN AGED OAK 12604	0-86348-12604-6	15.45
OLD MASTERS	12345	315-558		4	QUART OLD MASTERS WIPING STAIN WTHRD WD 12704	0-86348-12704-3	15.45
OLD MASTERS	12345	315-564		4	QUART OLD MASTERS WIPING STAIN NAT WLNT 12804	0-86348-12804-0	15.45
OLD MASTERS	12345	315-572		4	QUART OLD MASTERS WIPING STAIN PECAN 12904	0-86348-12904-7	15.45
OLD MASTERS	12345	315-580		4	QUART OLD MASTERS WIPING STAIN AME WLNT 13004	0-86348-13004-3	15.45
OLD MASTERS	1235	269-720		4	QUART OLD MASTERS WIPING STN CRMSN FIRE 14904	0-86348-14904-5	21.37
OLD MASTERS	12345	315-390		4	QUART OLD MASTERS WIPING STAIN RCH MAHG 15004	0-86348-15004-1	21.37
OLD MASTERS	12345	315-408		4	QUART OLD MASTERS WIPING STAIN VINT BUR 15104	0-86348-15104-8	21.37
OLD MASTERS	12345	315-409		4	QUART OLD MASTERS WIPING STAIN ESPRESSO 15204	0-86348-15204-5	21.37
OLD MASTERS	12345	315-582		4	QUART OLD MASTERS WIPING STAIN CRBN BLK 15304	0-86348-15304-2	21.37
OSI - HENKEL / POLYSEAMSEAL	12345	078-147		12	10 OZ PL400 HEAVY DUTY SUBFLOOR ADHESIVE	0-79340-68972-5	2.95
OSI - HENKEL / POLYSEAMSEAL	12345	078-154		12	28 OZ PL400 HEAVY DUTY SUBFLOOR ADHESIVE	0-79340-68903-9	5.72
PREMIER PAINT ROLLER CO. LLC	12345	538-041		24	9" PREMIER/ZPRO PLSTC PAINT TRAY GRN GPT	0-44359-00204-9	1.08
PREMIER PAINT ROLLER CO. LLC	12345	538-033		36	9" Z-PRO STADIUM PLASTIC PAINT TRAY 25	0-14958-00025-8	2.00
PREMIER PAINT ROLLER CO. LLC	12345	538-017		48	9" PREMIER/ZPRO PLSTC PAINT TRAY LNR PTL	0-44359-32181-2	0.43
PRO SOLUTIONS	12345	640-276		12	1-1/2" PRO SOLTNS SRT POLYESTER ANG STD 22215	7-42439-22215-7	1.76
PRO SOLUTIONS	12345	640-284		12	2" PRO SOLTNS SRT POLYESTER ANG STD 22220	7-42439-22220-1	2.41
PRO SOLUTIONS	12345	640-292		12	2-1/2" PRO SOLTNS SRT POLYESTER ANG STD 22225	7-42439-22225-6	3.02
PRO SOLUTIONS	12345	640-300		12	3" PRO SOLTNS SRT POLYESTER ANG STD 22230	7-42439-22230-0	3.73
PURDY	12345	348-102		6	1" PURDY XL-DALE SATN-EDG NYLOX/POLY A/S	7-16341-00840-6	6.60
PURDY	1235	348-110		6	1-1/2" PURDY XL-DALE SATN-EDG NYLOX/POLY A/S	7-16341-00850-5	7.55
PURDY	12345	348-128		6	2" PURDY XL-DALE SATN-EDG NYLOX/POLY A/S	7-16341-00860-4	8.94
PURDY	1235	348-136		6	2-1/2" PURDY XL-DALE SATN-EDG NYLOX/POLY A/S	7-16341-00870-3	10.60
RUST-OLEUM CORPORATION	12	178-574		6	QUART WATCO CLEAR LACQUER SATIN 63241	0-26748-06324-4	10.42
RUST-OLEUM CORPORATION	2	178-582		2	GAL WATCO CLEAR LACQUER SATIN 63231	0-26748-06323-7	28.70

VENDOR	LOC	PART #	QTY	CS	DESCRIPTION	UPC	PROMO
RUST-OLEUM CORPORATION	123	178-590		6	SPRAY WATCO CLEAR LACQUER SATIN 63281	0-26748-06328-2	6.13
RUST-OLEUM CORPORATION	12	178-616		6	QUART WATCO CLEAR LACQUER GLOSS 63041	0-26748-06304-6	10.42
RUST-OLEUM CORPORATION	123	178-632		6	SPRAY WATCO CLEAR LACQUER GLOSS 63081	0-26748-06308-4	6.13
RUST-OLEUM CORPORATION	12	178-657		6	QUART WATCO CLEAR LACQUER S-GLS 63141	0-26748-06314-5	10.42
RUST-OLEUM CORPORATION	2	178-665		2	GAL WATCO CLEAR LACQUER S-GLS 63131	0-26748-06313-8	28.70
RUST-OLEUM CORPORATION	123	178-673		6	SPRAY WATCO CLEAR LACQUER S-GLS 63181	0-26748-06318-3	6.13
RUST-OLEUM CORPORATION	124	379-561		2	GAL RUST SURE COLOR FLAT WHITE 380215	0-20066-01932-7	20.18
RUST-OLEUM CORPORATION	124	379-562		2	GAL RUST SURE COLOR FLAT BLACK 380216	0-20066-01933-4	20.18
RUST-OLEUM CORPORATION	124	379-563		2	GAL RUST SURE COLOR EGGSHELL WHITE 380217	0-20066-01934-1	20.18
RUST-OLEUM CORPORATION	124	379-564		2	GAL RUST SURE COLOR EGGSHELL BLACK 380218	0-20066-01935-8	20.18
RUST-OLEUM CORPORATION	124	379-565		2	GAL RUST SURE COLOR EGGSHELL ALP WHITE 380219	0-20066-01936-5	20.18
RUST-OLEUM CORPORATION	124	379-566		2	GAL RUST SURE COLOR EGGSHELL LIN WHITE 380220	0-20066-01937-2	20.18
RUST-OLEUM CORPORATION	124	379-567		2	GAL RUST SURE COLOR EGGSHELL ANT WHITE 380221	0-20066-01938-9	20.18
RUST-OLEUM CORPORATION	124	379-568		2	GAL RUST SURE COLOR EGGSHELL SFT BEIGE 380222	0-20066-01939-6	20.18
RUST-OLEUM CORPORATION	124	379-569		2	GAL RUST SURE COLOR EGGSHELL DOV GRAY 380223	0-20066-01940-2	20.18
RUST-OLEUM CORPORATION	124	379-570		2	GAL RUST SURE COLOR EGGSHELL STM GRAY 380224	0-20066-01941-9	20.18
RUST-OLEUM CORPORATION	124	379-571		2	GAL RUST SURE COLOR EGGSHELL SKY BLUE 380225	0-20066-01942-6	20.18
RUST-OLEUM CORPORATION	124	379-572		2	GAL RUST SURE COLOR EGGSHELL SMK NAVY 380226	0-20066-01943-3	20.18
RUST-OLEUM CORPORATION	124	379-573		2	GAL RUST SURE COLOR SEMI-GLOSS WHITE 380227	0-20066-01944-0	20.18
RUST-OLEUM CORPORATION	124	379-574		2	GAL RUST SURE COLOR SEMI-GLOSS BLACK 380228	0-20066-01945-7	20.18
SEYMOUR OF SYCAMORE	12345	393-884		12	SPR CUSTOM WATER BLEND (Z2500/Z2501) 16-3393	0-43281-00486-2	5.46
SEYMOUR OF SYCAMORE	12345	393-892		12	SPR CUSTOM SOLVENT BLND (Z2500/Z2501) 16-3395	0-43281-00487-9	3.53
SEYMOUR OF SYCAMORE	2345	393-942		12	16 OZ UNIVERSAL WATER BLEND AERO BLANK 16-393	0-43281-00721-4	3.93
SEYMOUR OF SYCAMORE	2345	393-967		12	16 OZ UNIVERSAL SLVNT BLEND AERO BLANK 16-395	0-43281-00592-0	3.39
SHURTAPE TECHNOLOGIES LLC	1234	397-450		6	36MMX55M FROGTAPE PAINTBLOCK PRO GRADE 104956	0-75353-14276-9	16.42
SHURTAPE TECHNOLOGIES LLC	1234	397-452		6	48MMX55M FROGTAPE PAINTBLOCK PRO GRADE 104957	0-75353-14277-6	16.42
SHURTAPE TECHNOLOGIES LLC	12345	397-596		14	24MMX55M FROGTAPE PAINTBLOCK TAPE 210732	6-82994-82011-8	4.33
SHURTAPE TECHNOLOGIES LLC	12345	397-604		10	36MMX55M FROGTAPE PAINTBLOCK TAPE 111990	6-82994-82021-7	6.49
SHURTAPE TECHNOLOGIES LLC	12345	397-612		8	48MMX55M FROGTAPE PAINTBLOCK TAPE 150530	6-82994-82031-6	8.64
SPRING TOOLS	12345	318-303		10	SPRING TOOLS NAIL SET & HINGE PIN TOOL PM407	7-61751-00063-2	13.25
SPRING TOOLS	12345	318-311		10	SPRING TOOLS 1/32 X 2/32 NAIL SET 32R12-1	7-61751-00005-2	6.54
TRIMACO INC.	12345	449-215		12	4X15' TRIMACO CANVAS DROP 6OZ UTILITY 56708	0-47034-56708-6	6.55
TRIMACO INC.	12345	449-223		6	9X12' TRIMACO CANVAS DROP 6OZ UTILITY 56701	0-47034-56701-7	11.65
TRIMACO INC.	12345	449-231		4	12X15' TRIMACO CANVAS DROP 6OZ UTILITY 56703	0-47034-56703-1	19.43
WOOSTER BRUSH COMPANY	12345	518-100		12	1" WOOSTER GOLDEN SOFTIP NYL/POLY Q3108	0-71497-10562-2	1.33
WOOSTER BRUSH COMPANY	12345	518-118		12	1-1/2" WOOSTER GOLDEN SOFTIP NYL/POLY Q3108	0-71497-10563-9	1.75
WOOSTER BRUSH COMPANY	12345	518-126		12	2" WOOSTER GOLDEN SOFTIP NYL/POLY Q3108	0-71497-10564-6	2.24
WOOSTER BRUSH COMPANY	12345	518-134		12	2-1/2" WOOSTER GOLDEN SOFTIP NYL/POLY Q3108	0-71497-10565-3	3.22
WOOSTER BRUSH COMPANY	12345	518-142		12	3" WOOSTER GOLDEN SOFTIP NYL/POLY Q3108	0-71497-10566-0	3.94

Customer Name: _____ Customer #: _____ P.O.# _____

Phone 800.877.6111 | Fax 888.777.1953 | customerservice@paintsundries.com | paintsundries.com

Promotional orders will be shipped with stock order. Account must be in good standing order. Items must be ordered in full case quantities. To receive special pricing, please place all promotional orders directly with your Sales Representative or our Customer Service Department. Prices subject to change without notice. ACA PaintCare Recovery Fees may apply.